

# Jesus Wants Me for a Sunbeam

Flute and piano

Music by Edwin O. Excell

Arranged by Anne Britt

Happily

*mf*

Flute

Piano

*mf*

*rit.*

*a tempo*

5

9

13

13

17

Solo interlude

17

21

21

# Jesus Wants Me for a Sunbeam

Flute and piano

Piano

Music by Edwin O. Excell  
Arranged by Anne Britt

Happily

Measures 1-5 of the piano accompaniment. The music is in 6/8 time. Measure 1 starts with a *mf* dynamic. Measure 2 includes a *rit.* (ritardando) marking. Measure 3 includes an *a tempo* marking. The right hand features a melodic line with eighth notes and chords, while the left hand provides a simple harmonic accompaniment with quarter notes.

Measures 6-10 of the piano accompaniment. Measure 6 is marked with a '6' above the staff. The right hand continues with a melodic line, and the left hand maintains the harmonic accompaniment. Measure 10 ends with a fermata over the final note.

Measures 11-15 of the piano accompaniment. Measure 11 is marked with an '11' above the staff. The right hand features a more active melodic line with eighth notes. The left hand continues with the harmonic accompaniment. Measure 15 ends with a fermata over the final note.

Measures 16-20 of the piano accompaniment. Measure 16 is marked with a '16' above the staff. Measure 17 is labeled 'Solo interlude' and begins with a *f* (forte) dynamic. The right hand has a melodic line, and the left hand has a rhythmic accompaniment of chords. Measure 20 ends with a fermata over the final note.

# Jesus Wants Me for a Sunbeam

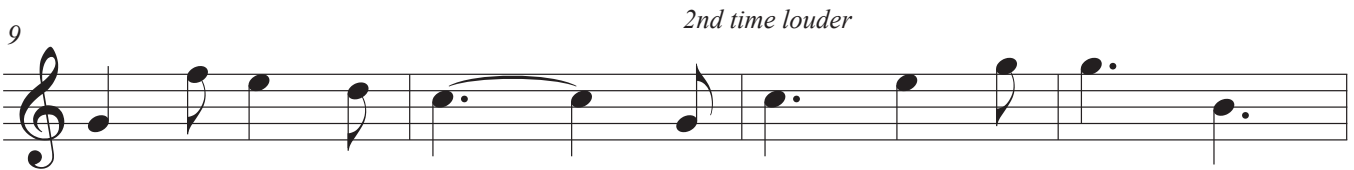
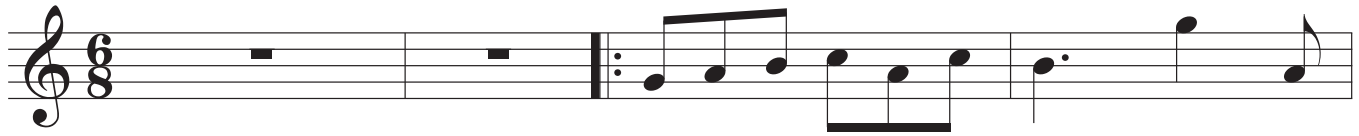
Flute and piano

Flute

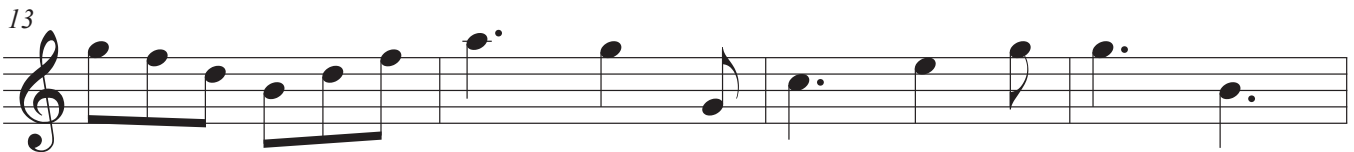
Music by Edwin O. Excell  
Arranged by Anne Britt

Happily

*mf*

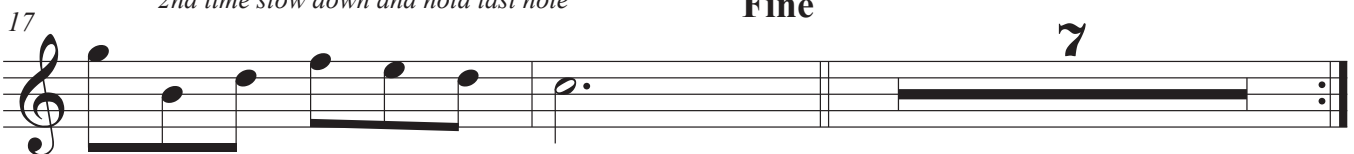


*2nd time louder*



*2nd time slow down and hold last note*

**Fine**



7